

VÝKAZ DOSAVADNÍHO A NOVÉHO STAVU ÚDAJŮ KATASTRU NEMOVITOSTÍ															
Dosavadní stav			Nový stav												
Označení pozemku parc. číslem	Výměra parcely		Druh pozemku Způsob využití	Označení pozemku parc. číslem	Výměra parcely		Druh pozemku Způsob využití	Typ stavby Způsob využití	Zpús. určení výměr	Porovnání se stavem evidence právních vztahů					
	ha	m <sup>2</sup>			ha	m <sup>2</sup>				Díl přechází z pozemku označeného v katastru nemovitostí	dřívější poz. evidenci	Číslo listu vlastnictví	Výměra dílu ha m <sup>2</sup>		Označení dílu
st.147										st.147		10001			
61										61		10001			
524/25										524/25		10001			
763/7										763/7		10001			
1297/3										1297/3		10001			
1553/4										1553/4		10001			
1554										1554		10001			
1570/1										1570/1		10001			
1580/1										1580/1		10001			
1580/2										1580/2		10001			
1580/6										1580/6		10001			
1580/7										1580/7		10001			
1580/22										1580/22		10001			
1580/24										1580/24		10001			
1582/76										1582/76		188			
1582/82										1582/82		188			
1582/83										1582/83		188			
1582/84										1582/84		10001			
1582/124										1582/124		188			
1600										1600		10001			
1625										1625		10001			

Oprávněný: dle listin

Druh věcného břemene: dle listin

<b>GEOMETRICKÝ PLÁN</b> <b>pro</b> vymezení rozsahu věcného břemene k části pozemku	Geometrický plán ověřil autorizovaný zeměměřický inženýr:		Stejnopis ověřil autorizovaný zeměměřický inženýr:	
	Jméno, příjmení: [REDAKCE]		Jméno, příjmení:	
	Číslo položky rejstříku autorizovaných zeměměřických inženýrů: 2717/2015		Číslo položky rejstříku autorizovaných zeměměřických inženýrů:	
	Dne: 30. října 2025      Číslo: 270/2025		Dne:      Číslo:	
Náležitosti a přesnosti odpovídá právním předpisům.		Tento stejnopis odpovídá geometrickému plánu v elektronické podobě uloženému v dokumentaci katastrálního úřadu.		
Vyhotovitel: GK GEO2007, s.r.o. Vrchní I 691 63 Velké Němčice IČO: 277 36 458	<b>Katastrální úřad souhlasí s očíslováním parcel.</b>		<b>Ověření stejnopisu geometrického plánu v listinné podobě.</b>	
Číslo plánu: 318-30/2025				
Okres: Zlín				
Obec: Vlachova Lhota				
Kat. území: Vlachova Lhota				
Mapový list: Zlín 0-7/41, 43, 34				
Dosaďadním vlastníkům pozemků byla poskytnuta možnost seznámit se v terénu s průběhem navrhovaných nových hranic, které byly označeny předepsaným způsobem:				

## Seznam souřadnic (S-JTSK)

Číslo bodu	Souřadnice pro zápis do KN			Souřadnice určené měřením		
	Y	X	Kód kv.	Y	X	Poznámka
85-1	501046.50	1175349.30	8			
86-32	500946.99	1175266.48	8			
114-3892	501216.11	1175451.38	8			
115-1500	501042.45	1175299.05	8			
115-1733	501019.07	1175312.38	8			
115-2395	500942.57	1175275.32	8			
115-2477	500932.27	1175287.20	8			
115-2734	500904.04	1175313.53	8			
124-35	501100.50	1175787.55	8			
133-30	501130.66	1175404.28	3			
138-10	500947.44	1175265.11	3			
157-59	501143.71	1175601.72	3			
174-1	501098.52	1175489.19	3			
1	501215.87	1175455.19	3			
2	501216.88	1175449.48	3			
3	501215.86	1175452.35	8			
4	501215.37	1175455.11	3			
5	501215.71	1175456.17	3			
6	501215.23	1175456.05	3			
7	501215.13	1175458.12	3			
8	501214.65	1175457.98	3			
9	501214.96	1175458.71	3			
10	501214.48	1175458.59	3			
11	501214.00	1175462.53	3			
12	501213.52	1175462.41	3			
13	501213.35	1175464.96	3			
14	501212.87	1175464.82	3			
15	501211.90	1175469.95	3			
16	501211.42	1175469.81	3			
17	501209.82	1175476.84	3			
18	501209.34	1175476.72	3			
19	501208.10	1175484.92	3			
20	501207.62	1175484.78	3			
21	501207.18	1175487.38	3			
22	501206.70	1175487.22	3			
23	501206.81	1175488.66	3			
24	501206.35	1175488.48	3			
25	501205.99	1175490.39	3			
26	501205.53	1175490.19	3			
27	501205.68	1175491.27	3			
28	501205.18	1175491.19	3			
29	501205.67	1175491.76	3			
30	501205.17	1175491.74	3			
31	501205.57	1175493.58	3			
32	501205.07	1175493.48	3			
33	501205.29	1175494.35	3			
34	501204.77	1175494.61	8			
35	501204.81	1175494.03	8			
36	501036.30	1175451.19	3			
37	501036.10	1175450.98	3			
38	501035.74	1175451.32	3			
39	501035.98	1175451.59	3			
40	501036.61	1175451.37	3			
41	501036.29	1175451.77	3			
42	501042.52	1175457.82	3			
43	501042.14	1175458.16	3			
44	501043.69	1175459.17	8			
45	501043.30	1175459.48	8			
46	501056.28	1175463.53	8			
47	501056.75	1175463.29	8			
48	501052.83	1175460.25	3			
49	501053.19	1175459.91	3			
50	501051.51	1175458.71	3			
51	501051.93	1175458.43	3			
52	501050.63	1175457.09	3			
53	501051.09	1175456.91	3			
54	501050.43	1175456.37	3			
55	501050.91	1175456.21	3			

56	501050.29	1175456.02	3
57	501050.42	1175455.01	3
58	501049.79	1175456.39	3
59	501049.33	1175455.68	3
60	501048.64	1175455.27	3
61	501047.60	1175454.37	3
62	501048.27	1175455.48	3
63	501048.90	1175453.62	3
64	501049.35	1175454.37	3
65	501049.61	1175454.50	3
66	501049.72	1175454.79	3
67	501065.84	1175447.25	3
68	501065.95	1175447.75	3
69	501064.83	1175445.53	3
70	501066.45	1175447.29	3
71	501065.29	1175445.33	3
72	501062.98	1175440.06	3
73	501063.45	1175439.90	3
74	501066.45	1175448.08	3
75	501065.95	1175448.30	3
76	501067.14	1175448.68	3
77	501066.90	1175449.14	3
78	501068.55	1175449.00	3
79	501068.15	1175449.42	3
80	501071.61	1175458.88	3
81	501071.27	1175459.50	3
82	501071.81	1175458.82	3
83	501071.97	1175459.30	3
84	501076.26	1175457.21	3
85	501076.42	1175457.69	3
86	501078.70	1175456.43	3
87	501078.78	1175456.93	3
88	501079.31	1175456.42	3
89	501079.19	1175456.92	3
90	501082.79	1175458.18	3
91	501082.53	1175458.60	3
92	501085.83	1175460.43	3
93	501085.41	1175460.75	3
94	501086.42	1175461.88	3
95	501085.94	1175462.04	3
96	501088.61	1175470.17	3
97	501088.13	1175470.29	3
98	501091.02	1175479.61	3
99	501090.54	1175479.71	3
100	501091.58	1175482.96	3
101	501091.08	1175483.04	3
102	501092.33	1175487.16	3
103	501091.89	1175487.52	3
104	501093.33	1175487.55	8
105	501093.12	1175488.01	3
106	501098.94	1175490.86	3
107	501100.61	1175492.43	3
108	501094.22	1175467.96	8
109	501093.71	1175468.11	3
110	501096.62	1175482.94	3
111	501097.42	1175484.66	3
112	501097.11	1175482.85	3
113	501096.93	1175484.77	3
114	501098.06	1175486.80	8
115	501098.28	1175489.28	3
116	501099.35	1175490.51	3
117	501098.88	1175489.41	3
118	501099.45	1175490.84	3
119	501100.26	1175491.43	3
120	501100.38	1175491.22	3
121	501101.12	1175491.66	3
122	501100.91	1175492.02	3
123	501101.32	1175492.22	3
124	501101.08	1175492.66	3
125	501105.51	1175494.65	3
126	501105.25	1175495.08	3
127	501111.10	1175498.21	3

128	501110.84	1175498.64	3
129	501115.66	1175500.78	3
130	501115.31	1175501.16	3
131	501116.06	1175501.41	3
132	501115.55	1175501.55	3
133	501116.01	1175502.40	3
134	501115.50	1175502.54	3
135	501116.21	1175502.71	3
136	501115.86	1175503.09	3
137	501124.88	1175507.64	3
138	501124.63	1175508.08	3
139	501130.94	1175510.91	3
140	501130.70	1175511.34	3
141	501134.07	1175512.74	3
142	501133.80	1175513.16	3
143	501137.62	1175515.32	3
144	501137.32	1175515.72	3
145	501139.10	1175516.45	3
146	501138.77	1175516.83	3
147	501140.06	1175517.43	3
148	501139.68	1175517.76	3
149	501146.04	1175525.13	3
150	501145.63	1175525.42	3
151	501147.02	1175526.71	3
152	501146.73	1175527.19	3
153	501147.99	1175526.03	3
154	501147.27	1175527.14	3
155	501148.19	1175526.50	3
156	501148.36	1175529.19	3
157	501147.91	1175529.41	3
158	501149.14	1175530.81	3
159	501148.68	1175531.01	3
160	501151.29	1175536.05	3
161	501150.82	1175536.23	3
162	501152.73	1175540.27	3
163	501152.26	1175540.43	3
164	501153.60	1175542.64	3
165	501153.13	1175542.79	3
166	501154.90	1175547.24	3
167	501154.41	1175547.36	3
168	501155.73	1175550.61	3
169	501155.24	1175550.73	3
170	501156.34	1175553.23	3
171	501155.85	1175553.32	3
172	501156.49	1175554.30	3
173	501156.03	1175554.62	3
174	501146.80	1175588.70	3
175	501147.82	1175581.08	3
176	501147.32	1175581.00	3
177	501146.30	1175588.60	3
178	501145.74	1175593.20	3
179	501145.26	1175593.10	3
180	501144.18	1175601.82	3
181	501142.38	1175610.45	3
182	501143.57	1175605.03	8
183	501143.08	1175604.93	8
184	501141.95	1175610.07	3
185	501141.67	1175610.50	3
186	501141.86	1175610.57	3
187	501141.78	1175610.01	3
188	501155.09	1175588.27	3
189	501156.34	1175577.87	3
190	501155.85	1175577.79	3
191	501154.59	1175588.21	3
192	501153.96	1175595.30	3
193	501153.40	1175595.63	3
194	501154.98	1175595.74	3
195	501156.68	1175596.16	8
196	501156.79	1175595.67	8
197	501155.02	1175595.24	3
198	501153.87	1175595.84	3
199	501153.27	1175599.34	3

200	501152.78	1175599.25	3		
201	501151.89	1175607.69	3		
202	501151.40	1175607.61	3		
203	501150.87	1175613.34	3		
204	501150.37	1175613.25	3		
205	501149.42	1175620.90	3		
206	501148.89	1175621.04	3		
207	501150.90	1175621.20	8		
208	501149.31	1175621.39	3		
209	501150.79	1175621.68	8		
210	501149.14	1175621.98	3		
211	501148.65	1175621.86	3		
212	501147.98	1175627.62	3		
213	501147.49	1175627.51	3		
214	501145.90	1175636.94	3		
215	501145.28	1175637.41	3		
216	501147.21	1175637.22	8	501147.89	1175637.37
217	501145.83	1175637.43	3		
218	501147.09	1175637.71	8	501147.78	1175637.86
219	501145.49	1175637.93	3		
220	501145.93	1175638.22	3		
221	501146.87	1175637.97	3		
222	501146.15	1175637.76	3		
223	501146.57	1175638.41	3		
224	501147.00	1175638.14	8	501147.18	1175638.38
225	501146.64	1175638.50	3		
226	501146.06	1175641.06	3		
227	501145.98	1175641.63	3		
228	501145.56	1175641.27	3		
229	501143.78	1175650.75	3		
230	501143.27	1175650.75	3		
231	501143.18	1175651.00	3		
232	501144.12	1175650.60	8		
233	501143.63	1175651.29	3		
234	501143.98	1175651.21	8		
235	501141.32	1175661.43	3		
236	501140.84	1175661.32	3		
237	501139.74	1175668.05	3		
238	501139.26	1175667.93	3		
239	501138.81	1175671.31	3		
240	501138.37	1175671.01	3		
241	501137.76	1175672.10	3		
242	501137.32	1175671.82	3		
243	501136.39	1175677.18	3		
244	501135.82	1175677.43	3		
245	501136.74	1175678.03	3		
246	501137.66	1175678.62	8		
247	501136.15	1175678.25	3		
248	501137.54	1175679.13	8		
249	501135.28	1175682.19	3		
250	501134.79	1175682.10	3		
251	501135.04	1175684.10	3		
252	501134.55	1175684.01	3		
253	501134.07	1175688.31	3		
254	501133.52	1175688.44	3		
255	501135.36	1175688.59	8		
256	501133.95	1175688.79	3		
257	501135.24	1175689.08	8		
258	501132.78	1175693.70	3		
259	501132.29	1175693.58	3		
260	501130.96	1175701.61	3		
261	501130.47	1175701.50	3		
262	501130.75	1175702.60	3		
263	501130.24	1175702.58	3		
264	501130.82	1175703.12	3		
265	501130.34	1175703.29	3		
266	501131.27	1175703.85	3		
267	501130.79	1175704.03	3		
268	501131.39	1175704.57	3		
269	501130.89	1175704.59	3		
270	501131.30	1175705.57	3		
271	501131.41	1175705.72	8		

272	501131.28	1175706.29	8
273	501131.21	1175706.22	3
274	501130.77	1175705.90	3
275	501128.73	1175714.45	3
276	501129.12	1175715.69	8
277	501129.23	1175714.53	3
278	501128.61	1175715.42	3
279	501128.50	1175715.82	3
280	501129.01	1175716.17	8
281	501128.46	1175716.10	3
282	501128.43	1175718.54	3
283	501127.94	1175718.42	3
284	501128.09	1175719.75	3
285	501127.64	1175719.51	3
286	501127.79	1175720.13	3
287	501127.45	1175719.75	3
288	501127.44	1175720.36	3
289	501127.10	1175719.98	3
290	501127.14	1175720.71	3
291	501126.69	1175720.47	3
292	501126.85	1175721.79	3
293	501126.36	1175721.66	3
294	501124.77	1175729.97	3
295	501124.28	1175729.87	3
296	501124.52	1175731.51	3
297	501124.01	1175731.50	3
298	501124.62	1175732.56	3
299	501124.12	1175732.62	3
300	501124.74	1175733.43	3
301	501124.23	1175733.40	3
302	501124.36	1175735.11	3
303	501123.87	1175735.00	3
304	501123.98	1175737.07	3
305	501123.49	1175736.97	3
306	501122.77	1175742.34	3
307	501122.23	1175742.47	3
308	501122.97	1175742.38	8
309	501122.65	1175742.83	3
310	501122.85	1175742.87	8
311	501121.99	1175745.18	3
312	501121.51	1175745.05	3
313	501120.59	1175750.99	3
314	501120.11	1175750.87	3
315	501120.38	1175751.79	3
316	501119.84	1175751.90	3
317	501120.77	1175751.90	8
318	501120.26	1175752.27	3
319	501120.66	1175752.39	8
320	501118.37	1175759.72	3
321	501117.82	1175759.85	3
322	501118.94	1175759.86	8
323	501118.25	1175760.21	3
324	501118.82	1175760.35	8
325	501117.58	1175763.44	3
326	501117.09	1175763.34	3
327	501117.14	1175765.61	3
328	501116.65	1175765.51	3
329	501116.16	1175769.97	3
330	501115.67	1175769.87	3
331	501115.86	1175771.61	3
332	501115.37	1175771.51	3
333	501115.45	1175773.52	3
334	501114.96	1175773.42	3
335	501114.47	1175778.44	3
336	501113.98	1175778.33	3
337	501112.06	1175788.51	3
338	501112.31	1175788.59	8
339	501112.42	1175788.11	8
340	501112.17	1175788.02	3
341	501111.60	1175788.29	3
342	501111.25	1175791.64	3
343	501110.77	1175791.51	3

344	501110.92	1175792.81	3
345	501110.43	1175792.69	3
346	501109.85	1175797.69	3
347	501109.37	1175797.56	3
348	501109.58	1175798.64	3
349	501109.04	1175798.74	3
350	501109.96	1175798.77	8
351	501109.46	1175799.13	3
352	501109.85	1175799.26	8
353	501108.23	1175804.82	3
354	501107.74	1175804.71	3
355	501107.63	1175807.47	3
356	501107.14	1175807.35	3
357	501106.89	1175810.36	3
358	501106.41	1175810.25	3
359	501106.11	1175814.07	3
360	501105.68	1175813.70	3
361	501105.76	1175814.20	3
362	501105.48	1175813.79	3
363	501105.58	1175817.77	8
364	501104.88	1175817.69	3
365	501104.42	1175818.13	3
366	501105.47	1175818.26	8
367	501101.40	1175784.01	3
368	501101.04	1175785.21	8
369	501100.80	1175787.74	8
370	501101.86	1175784.21	3
371	501101.87	1175783.24	3
372	501102.29	1175783.52	3
373	501102.31	1175782.68	3
374	501102.75	1175782.92	3
375	501102.58	1175781.87	3
376	501103.06	1175782.01	3
377	501103.89	1175775.72	3
378	501104.37	1175775.82	3
379	501105.98	1175766.91	3
380	501106.52	1175766.79	3
381	501105.29	1175766.73	8
382	501106.09	1175766.42	3
383	501105.41	1175766.24	8
384	501109.42	1175752.11	3
385	501109.90	1175752.23	3
386	501110.86	1175745.92	3
387	501111.34	1175746.04	3
388	501112.64	1175738.28	3
389	501113.17	1175738.18	3
390	501112.13	1175738.11	8
391	501112.75	1175737.79	3
392	501112.24	1175737.62	8
393	501115.02	1175727.96	3
394	501115.50	1175728.08	3
395	501116.66	1175721.01	3
396	501117.14	1175721.13	3
397	501118.74	1175712.02	3
398	501119.28	1175711.89	3
399	501118.01	1175711.85	8
400	501118.86	1175711.53	3
401	501118.11	1175711.36	8
402	501119.23	1175710.26	3
403	501119.71	1175710.38	3
404	501120.56	1175704.06	3
405	501121.04	1175704.18	3
406	501121.52	1175700.24	3
407	501122.07	1175700.09	3
408	501120.42	1175700.08	8
409	501121.64	1175699.75	3
410	501120.52	1175699.59	8
411	501123.00	1175693.63	3
412	501123.48	1175693.73	3
413	501124.47	1175687.12	3
414	501124.95	1175687.24	3
415	501124.99	1175685.02	3

416	501125.53	1175684.90	3
417	501123.99	1175684.78	8
418	501125.10	1175684.54	3
419	501124.12	1175684.30	8
420	501126.49	1175678.44	3
421	501126.97	1175678.54	3
422	501127.33	1175674.35	3
423	501127.87	1175674.20	3
424	501126.60	1175674.24	8
425	501127.45	1175673.86	3
426	501126.72	1175673.76	8
427	501127.89	1175672.45	3
428	501128.37	1175672.57	3
429	501128.38	1175670.24	3
430	501128.92	1175670.14	3
431	501128.27	1175670.06	3
432	501128.66	1175669.75	3
433	501127.65	1175669.99	8
434	501127.87	1175669.13	8
435	501128.47	1175669.20	3
436	501128.66	1175668.96	3
437	501129.12	1175669.18	3
438	501129.58	1175664.98	3
439	501130.06	1175665.10	3
440	501130.23	1175662.06	3
441	501130.71	1175662.18	3
442	501130.80	1175659.88	3
443	501131.28	1175660.00	3
444	501132.15	1175653.84	3
445	501132.63	1175653.96	3
446	501133.78	1175646.91	3
447	501134.31	1175646.84	3
448	501133.43	1175646.71	8
449	501133.90	1175646.41	3
450	501133.55	1175646.21	8
451	501135.75	1175638.63	3
452	501136.23	1175638.75	3
453	501137.12	1175632.48	3
454	501137.66	1175632.34	3
455	501136.74	1175632.41	8
456	501137.24	1175631.99	3
457	501136.85	1175631.92	8
458	501137.77	1175631.94	3
459	501139.53	1175621.44	3
460	501140.01	1175621.54	3
461	501141.00	1175614.86	3
462	501141.48	1175614.96	3
463	501141.81	1175610.93	3
464	501142.31	1175611.01	3
465	501216.38	1175449.40	3
466	501094.32	1175468.45	8
467	501145.89	1175637.59	3
468	501019.46	1175214.86	3
469	501019.46	1175213.48	8
470	501018.96	1175212.85	8
471	501018.96	1175214.87	3
472	501019.69	1175218.79	3
473	501019.19	1175218.77	3
474	501019.44	1175220.89	8
475	501018.93	1175220.92	8
476	501032.13	1175249.73	3
477	501035.85	1175249.99	3
478	501035.88	1175249.49	3
479	501032.15	1175249.23	3
480	501029.39	1175249.62	3
481	501029.38	1175249.12	3
482	501019.84	1175250.14	3
483	501019.82	1175249.64	3
484	501040.21	1175239.02	3
485	501038.26	1175241.97	3
486	501038.68	1175242.24	3
487	501040.67	1175239.21	3

488	501040.69	1175236.75	3
489	501041.17	1175236.87	3
490	501042.36	1175230.42	3
491	501042.83	1175230.58	3
492	501044.18	1175225.87	3
493	501044.62	1175226.13	3
494	501044.83	1175225.10	3
495	501045.23	1175225.40	3
496	501048.11	1175220.56	3
497	501048.51	1175220.86	3
498	501049.14	1175219.24	3
499	501049.36	1175219.76	3
500	501049.70	1175219.30	3
501	501049.50	1175219.78	3
502	501053.82	1175222.64	3
503	501053.72	1175223.20	3
504	501055.58	1175223.98	8
505	501054.22	1175222.95	3
506	501055.27	1175224.37	8
507	501055.18	1175220.76	3
508	501055.56	1175221.08	3
509	501056.18	1175219.75	3
510	501056.48	1175220.17	3
511	501057.71	1175219.00	3
512	501058.01	1175219.40	3
513	501060.42	1175216.13	3
514	501060.48	1175216.79	3
515	501061.47	1175216.89	8
516	501061.15	1175217.27	8
517	501055.99	1175291.63	3
518	501057.23	1175291.73	3
519	501057.27	1175291.23	3
520	501055.42	1175291.08	3
521	501056.10	1175292.59	3
522	501055.59	1175292.48	3
523	501055.86	1175292.99	3
524	501055.49	1175292.63	3
525	501051.16	1175296.09	8
526	501050.99	1175295.60	3
527	501050.01	1175296.22	3
528	501050.01	1175295.71	3
529	501048.61	1175296.06	3
530	501048.63	1175295.56	3
531	501047.77	1175296.06	3
532	501047.65	1175295.56	3
533	501046.38	1175296.75	3
534	501046.15	1175296.30	3
535	501043.55	1175298.24	3
536	501043.63	1175297.63	3
537	501042.64	1175294.28	3
538	501043.16	1175297.89	3
539	501043.16	1175294.36	3
540	501042.99	1175293.54	3
541	501043.68	1175293.24	3
542	501042.77	1175298.68	3
543	501042.30	1175298.37	3
544	501042.98	1175299.05	8
545	501042.34	1175298.93	3
546	501042.42	1175299.08	8
547	501034.43	1175303.77	3
548	501034.17	1175303.35	3
549	500987.04	1175227.29	3
550	500987.26	1175227.84	3
551	500987.72	1175227.66	3
552	500987.42	1175226.89	3
553	500986.94	1175227.25	3
554	500986.95	1175226.73	3
555	500981.78	1175228.69	3
556	500981.62	1175228.21	3
557	500977.57	1175230.50	3
558	500977.35	1175230.06	3
559	500976.41	1175231.16	3

560	500976.15	1175230.74	3
561	500973.90	1175232.73	3
562	500973.66	1175232.29	3
563	500972.01	1175233.63	3
564	500971.83	1175233.15	3
565	500971.15	1175233.86	3
566	500971.00	1175233.38	3
567	500970.48	1175233.57	3
568	500970.66	1175233.75	3
569	500970.72	1175233.11	3
570	500963.11	1175231.91	3
571	500962.92	1175231.35	3
572	500959.65	1175233.06	3
573	500962.39	1175231.61	3
574	500959.49	1175232.58	3
575	500952.28	1175235.57	3
576	500952.12	1175235.09	3
577	500950.02	1175236.28	3
578	500949.86	1175235.81	3
579	500962.57	1175229.57	3
580	500963.07	1175229.55	3
581	500962.10	1175226.43	8
582	500962.59	1175226.35	8
583	500970.98	1175234.79	3
584	500970.48	1175234.75	3
585	500970.90	1175239.72	3
586	500970.40	1175239.76	3
587	500971.09	1175240.91	3
588	500970.59	1175241.01	3
589	500971.69	1175243.78	3
590	500971.21	1175243.92	3
591	500972.39	1175245.47	3
592	500971.93	1175245.69	3
593	500974.57	1175249.37	3
594	500974.13	1175249.63	3
595	500975.33	1175250.64	3
596	500974.91	1175250.92	3
597	500975.58	1175251.01	3
598	500975.04	1175251.10	3
599	500974.34	1175252.16	3
600	500975.35	1175251.49	3
601	500974.04	1175251.76	3
602	500966.92	1175258.71	3
603	500966.63	1175258.30	3
604	500966.17	1175258.72	3
605	500966.39	1175258.76	3
606	500966.37	1175258.24	3
607	500965.59	1175258.35	3
608	500965.87	1175257.93	3
609	500961.99	1175255.97	3
610	500962.23	1175255.53	3
611	500959.80	1175255.12	3
612	500959.69	1175254.54	3
613	500959.59	1175255.96	3
614	500959.32	1175254.98	3
615	500959.13	1175255.74	3
616	500955.97	1175254.32	3
617	500955.87	1175253.80	3
618	500955.44	1175254.67	3
619	500955.12	1175254.29	3
620	500951.53	1175258.98	3
621	500951.21	1175258.58	3
622	500949.78	1175259.98	3
623	500949.40	1175259.62	3
624	500948.31	1175262.96	3
625	500947.85	1175262.76	3
626	500946.71	1175265.79	3
627	500945.25	1175270.37	3
628	500944.83	1175270.07	3
629	500944.72	1175270.18	3
630	500944.46	1175270.10	3
631	500942.60	1175267.36	8

632	500944.09	1175270.50	3
633	500942.87	1175266.77	8
634	500944.68	1175270.96	3
635	500942.78	1175271.08	3
636	500942.44	1175270.60	3
637	500941.74	1175273.38	3
638	500941.10	1175273.60	3
639	500942.06	1175273.55	3
640	500941.84	1175274.01	3
641	500943.47	1175274.14	3
642	500942.85	1175274.42	3
643	500943.21	1175274.94	8
644	500934.19	1175284.66	8
645	500933.05	1175285.61	3
646	500931.36	1175286.97	3
647	500928.50	1175284.57	8
648	500931.24	1175287.58	3
649	500928.83	1175284.20	8
650	500928.82	1175290.75	3
651	500931.58	1175287.95	8
652	500928.46	1175290.39	3
653	500922.39	1175297.16	3
654	500922.06	1175296.78	3
655	500920.94	1175298.26	3
656	500920.60	1175297.89	3
657	500919.40	1175299.99	3
658	500919.02	1175299.67	3
659	500917.13	1175302.86	3
660	500916.97	1175302.26	3
661	500916.31	1175302.53	3
662	500916.18	1175301.93	3
663	500915.43	1175303.50	3
664	500915.09	1175303.12	3
665	500911.56	1175306.39	3
666	500911.23	1175306.01	3
667	500912.62	1175307.99	8
668	500911.17	1175306.71	3
669	500912.26	1175308.35	8
670	500906.09	1175310.99	3
671	500905.79	1175310.59	3
672	500904.73	1175311.99	3
673	500904.34	1175311.66	3
674	500904.06	1175313.21	3
675	500903.47	1175313.26	3
676	500903.70	1175313.73	8
677	500904.18	1175313.45	8
678	500900.67	1175315.16	3
679	500900.44	1175314.71	3
680	500896.23	1175317.66	3
681	500895.97	1175317.22	3
682	500889.30	1175321.84	3
683	500889.08	1175321.40	3
684	500888.55	1175322.14	3
685	500888.39	1175321.67	3
686	500886.96	1175322.62	3
687	500886.78	1175322.15	3
688	500883.35	1175324.37	3
689	500883.11	1175323.92	3
690	500875.42	1175328.94	3
691	500875.07	1175330.15	3
692	500875.54	1175329.89	3
693	500874.98	1175329.42	3
694	500873.60	1175328.65	3
695	500874.77	1175328.73	3
696	500873.62	1175328.09	3
697	500872.49	1175329.20	3
698	500872.23	1175328.76	3
699	500867.43	1175332.71	3
700	500867.13	1175332.31	3
701	500865.91	1175333.31	3
702	500866.23	1175333.73	3
703	500865.67	1175333.67	3

704	500867.06	1175335.66	3
705	500866.58	1175335.82	3
706	500867.39	1175337.03	3
707	500866.91	1175337.15	3
708	500870.34	1175348.19	3
709	500869.86	1175348.31	3
710	500872.38	1175356.97	3
711	500871.86	1175356.93	3
712	500872.13	1175357.59	3
713	500871.73	1175357.23	3
714	500868.35	1175359.61	3
715	500868.13	1175359.15	3
716	500867.12	1175360.09	3
717	500867.18	1175359.53	3
718	500866.49	1175359.03	8
719	500866.72	1175359.72	3
720	500866.93	1175358.78	8
721	500866.52	1175360.33	3
722	500866.13	1175359.95	3
723	500869.28	1175368.62	3
724	500868.66	1175368.41	3
725	500868.47	1175369.09	3
726	500868.31	1175368.61	3
727	500978.37	1175253.94	3
728	500978.01	1175254.30	3
729	500980.55	1175256.01	3
730	500980.25	1175256.41	3
731	500982.32	1175256.95	3
732	500982.10	1175257.39	3
733	500983.75	1175257.65	3
734	500983.47	1175258.07	3
735	500984.25	1175258.10	3
736	500983.72	1175258.30	3
737	500984.73	1175259.32	3
738	500984.00	1175258.83	3
739	500984.43	1175259.91	3
740	500986.64	1175258.84	3
741	500986.80	1175259.31	3
742	500989.22	1175257.79	3
743	500989.33	1175258.28	3
744	500981.81	1175262.76	3
745	500981.21	1175262.80	3
746	500992.58	1175277.46	3
747	500992.18	1175277.76	3
748	501000.56	1175287.15	3
749	501000.22	1175287.51	3
750	501002.77	1175288.70	3
751	501002.41	1175289.06	3
752	501006.08	1175293.23	3
753	501005.52	1175293.30	3
754	501000.31	1175297.60	3
755	501005.78	1175293.73	3
756	500999.97	1175297.23	3
757	501004.59	1175303.25	3
758	501000.01	1175298.04	3
759	501003.94	1175303.23	3
760	501004.16	1175303.74	3
761	501003.77	1175303.98	3
762	501003.51	1175303.55	3
763	501002.80	1175304.54	3
764	501002.67	1175304.04	3
765	501000.73	1175304.58	3
766	501000.71	1175304.08	3
767	501000.01	1175304.61	8
768	500999.79	1175304.12	8
769	500966.78	1175259.26	3
770	500966.22	1175259.44	3
771	500969.07	1175261.17	3
772	500968.72	1175261.52	3
773	500970.16	1175262.48	8
774	500969.59	1175262.57	8
775	500985.29	1175281.72	3

776	500983.95	1175282.64	8
777	500984.23	1175283.05	8
778	500985.60	1175282.12	3
779	500986.12	1175280.92	3
780	500986.10	1175281.66	3
781	500991.02	1175286.52	3
782	500990.62	1175286.82	3
783	500993.22	1175289.85	3
784	500992.82	1175290.15	3
785	500994.72	1175291.56	3
786	500994.15	1175291.67	3
787	500994.17	1175292.25	8
788	500994.49	1175292.05	3
789	500993.87	1175291.85	8
790	500996.82	1175293.95	3
791	500996.45	1175294.29	3
792	500999.57	1175296.74	3
793	500999.20	1175297.08	3
794	501009.18	1175299.33	3
795	501008.98	1175300.04	3
796	501009.65	1175298.19	8
797	501009.48	1175299.91	3
798	501009.98	1175298.71	8
799	501010.37	1175301.53	3
800	501009.95	1175301.81	3
801	501017.73	1175311.36	3
802	501017.33	1175311.66	3
803	501018.24	1175312.08	3
804	501017.98	1175312.56	3
805	501018.90	1175312.12	8
806	501018.54	1175312.60	3
807	501023.64	1175310.97	3
808	501021.13	1175311.60	8
809	501019.20	1175312.61	3
810	501023.52	1175311.51	3
811	501024.37	1175310.79	3
812	501018.64	1175313.23	3
813	501018.33	1175312.83	3
814	501015.91	1175314.66	3
815	501015.62	1175314.25	3
816	501015.34	1175315.14	3
817	501014.90	1175314.86	3
818	501015.31	1175315.24	3
819	501014.77	1175315.34	3
820	501016.09	1175316.36	3
821	501015.67	1175316.64	3
822	501020.52	1175323.13	3
823	501020.04	1175323.31	3
824	501020.68	1175323.28	3
825	501022.07	1175323.26	3
826	501020.59	1175323.78	3
827	501021.93	1175323.76	3
828	501022.57	1175323.58	3
829	501022.20	1175323.94	3
830	501023.28	1175324.79	3
831	501022.82	1175325.00	3
832	501027.01	1175335.47	3
833	501026.54	1175335.63	3
834	501027.53	1175337.03	3
835	501027.11	1175337.35	3
836	501028.66	1175337.78	3
837	501028.23	1175338.09	3
838	501029.09	1175339.42	3
839	501028.56	1175339.35	3
840	501027.11	1175340.65	8
841	501028.69	1175339.85	3
842	501026.94	1175340.17	8
843	501019.66	1175323.83	3
844	501018.78	1175323.37	3
845	501021.44	1175327.44	3
846	501019.12	1175323.85	3
847	501020.76	1175327.20	3

848	501020.62	1175327.82	3
849	501020.41	1175327.36	3
850	501018.50	1175323.89	3
851	501017.60	1175322.32	3
852	501017.99	1175322.00	3
853	501017.44	1175322.19	3
854	501017.50	1175321.59	3
855	501024.29	1175312.27	3
856	501024.04	1175311.51	3
857	501023.82	1175312.43	3
858	501025.18	1175314.70	3
859	501024.84	1175315.24	3
860	501025.78	1175314.62	3
861	501025.68	1175315.14	3
862	501026.06	1175314.78	3
863	501025.97	1175315.30	3
864	501034.82	1175313.42	3
865	501034.88	1175313.91	3
866	501035.57	1175313.38	3
867	501035.59	1175313.88	3
868	501025.14	1175310.40	3
869	501024.32	1175310.63	3
870	501025.38	1175311.21	3
871	501024.56	1175311.44	3
872	501024.52	1175311.31	3
873	501030.83	1175346.10	3
874	501030.37	1175346.34	3
875	501028.40	1175347.41	3
876	501030.47	1175346.83	3
877	501028.27	1175346.93	3
878	501026.30	1175347.99	3
879	501026.15	1175347.51	3
880	501019.50	1175350.25	8
881	501019.21	1175349.80	3
882	501018.73	1175350.39	8
883	501031.24	1175348.06	3
884	501030.75	1175348.14	3
885	501031.91	1175353.22	3
886	501031.42	1175353.32	3
887	501032.48	1175355.33	3
888	501032.00	1175355.46	3
889	501033.78	1175360.43	3
890	501033.23	1175360.28	3
891	501032.47	1175360.95	8
892	501033.32	1175360.77	3
893	501032.39	1175360.46	8
894	501035.28	1175370.83	3
895	501034.79	1175370.89	3
896	501035.38	1175372.26	3
897	501034.85	1175371.86	3
898	501034.19	1175372.52	3
899	501033.70	1175372.12	3
900	501034.10	1175374.76	3
901	501033.61	1175374.73	3
902	501034.01	1175375.81	3
903	501033.54	1175375.40	3
904	501032.09	1175376.23	8
905	501031.98	1175375.74	8
906	501046.35	1175349.83	3
907	501046.54	1175349.80	8
908	501045.45	1175349.09	8
909	501044.75	1175349.09	3
910	501041.83	1175349.97	3
911	501044.78	1175349.59	3
912	501041.77	1175349.47	3
913	501045.39	1175349.67	3
914	501045.40	1175349.59	3
915	501045.30	1175366.24	3
916	501045.22	1175366.13	3
917	501044.82	1175366.42	3
918	501045.09	1175366.79	3
919	501048.46	1175365.62	3

920	501048.35	1175366.15	3
921	501048.79	1175365.59	8
922	501049.15	1175366.85	8
923	501048.60	1175366.72	3
924	501049.84	1175369.68	3
925	501049.36	1175369.82	3
926	501050.50	1175371.72	3
927	501050.03	1175371.90	3
928	501054.11	1175379.65	3
929	501053.64	1175379.83	3
930	501054.47	1175380.70	3
931	501054.09	1175381.14	3
932	501054.75	1175380.58	8
933	501054.66	1175381.16	3
934	501054.97	1175381.03	8
935	501054.87	1175381.57	3
936	501054.42	1175381.79	3
937	501059.85	1175392.58	3
938	501059.40	1175392.79	3
939	501060.13	1175393.16	3
940	501059.78	1175393.58	3
941	501060.57	1175393.00	8
942	501060.36	1175393.60	3
943	501060.77	1175393.45	8
944	501060.75	1175394.34	3
945	501060.30	1175394.56	3
946	501063.34	1175400.31	3
947	501062.89	1175400.52	3
948	501064.06	1175401.71	3
949	501063.61	1175401.92	3
950	501065.70	1175405.62	3
951	501065.26	1175405.86	3
952	501066.76	1175407.20	3
953	501066.35	1175407.49	3
954	501071.04	1175412.77	3
955	501070.64	1175413.07	3
956	501071.87	1175413.92	3
957	501071.60	1175414.39	3
958	501072.73	1175414.01	3
959	501072.71	1175414.51	3
960	501074.16	1175413.96	3
961	501074.23	1175414.46	3
962	501076.37	1175413.45	3
963	501076.49	1175413.93	3
964	501079.03	1175412.73	3
965	501079.15	1175413.21	3
966	501079.77	1175412.56	3
967	501079.84	1175413.06	3
968	501079.98	1175413.05	3
969	501081.86	1175418.42	3
970	501080.46	1175412.92	3
971	501081.38	1175418.57	3
972	501082.28	1175419.58	3
973	501081.80	1175419.73	3
974	501081.87	1175420.05	3
975	501081.69	1175420.24	3
976	501073.03	1175424.06	3
977	501082.09	1175420.62	3
978	501072.85	1175423.59	3
979	501071.09	1175424.80	3
980	501070.99	1175424.30	3
981	501065.57	1175425.11	3
982	501065.53	1175424.61	3
983	501062.31	1175425.52	3
984	501062.21	1175425.02	3
985	501059.95	1175426.19	3
986	501059.88	1175425.69	3
987	501059.18	1175425.38	3
988	501059.48	1175426.01	3
989	501059.64	1175425.18	3
990	501056.33	1175418.59	3
991	501056.79	1175418.40	3

992	501059.87	1175426.45	3
993	501059.37	1175426.39	3
994	501059.94	1175428.94	3
995	501059.44	1175428.96	3
996	501049.00	1175404.18	3
997	501051.98	1175403.56	3
998	501051.87	1175403.07	3
999	501048.91	1175403.68	3
1000	501041.21	1175405.28	8
1001	501040.86	1175404.83	3
1002	501040.94	1175405.86	3
1003	501040.79	1175406.02	3
1004	501040.43	1175405.67	3
1005	501039.98	1175406.12	8
1006	501040.30	1175406.16	3
1007	501039.92	1175405.61	8
1008	501041.58	1175414.44	3
1009	501041.04	1175414.26	8
1010	501042.76	1175422.32	3
1011	501043.48	1175427.90	3
1012	501043.23	1175427.93	8
1013	501081.16	1175412.26	3
1014	501081.28	1175412.74	3
1015	501086.30	1175410.88	3
1016	501086.46	1175411.36	3
1017	501087.73	1175410.26	3
1018	501088.08	1175410.66	3
1019	501087.72	1175410.17	8
1020	501088.22	1175410.13	3
1021	501088.20	1175409.94	8
1022	501088.41	1175410.59	3
1023	501097.19	1175405.83	3
1024	501097.39	1175406.29	3
1025	501098.93	1175405.19	3
1026	501099.11	1175405.65	3
1027	501101.46	1175404.17	3
1028	501101.62	1175404.65	3
1029	501102.08	1175403.98	3
1030	501102.22	1175404.46	3
1031	501109.27	1175402.34	3
1032	501109.31	1175402.85	3
1033	501109.56	1175402.82	3
1034	501111.14	1175402.18	3
1035	501110.07	1175402.77	3
1036	501111.18	1175402.68	3
1037	501110.33	1175405.38	3
1038	501109.83	1175405.46	3
1039	501110.49	1175406.20	3
1040	501110.05	1175406.54	3
1041	501110.95	1175406.15	3
1042	501124.97	1175405.01	3
1043	501119.30	1175405.16	3
1044	501120.71	1175405.06	3
1045	501121.47	1175405.01	3
1046	501128.23	1175404.04	3
1047	501128.29	1175404.54	3
1048	501130.11	1175403.89	3
1049	501129.52	1175404.44	3
1050	501134.67	1175403.18	8
1051	501134.70	1175403.66	8
1052	501155.96	1175400.17	3
1053	501153.37	1175401.23	8
1054	501156.46	1175400.04	3
1055	501154.81	1175401.20	8
1056	501156.28	1175400.61	3
1057	501156.80	1175401.14	8
1058	501156.77	1175400.51	3
1059	501156.30	1175401.16	8
1060	501157.02	1175399.97	3
1061	501157.34	1175400.43	3
1062	501157.19	1175399.68	3
1063	501157.69	1175399.80	3

1064	501159.05	1175396.31	3
1065	501157.11	1175396.46	3
1066	501157.65	1175396.92	3
1067	501159.07	1175396.81	3
1068	501171.33	1175395.92	3
1069	501171.35	1175396.42	3
1070	501173.50	1175395.79	3
1071	501173.52	1175396.29	3
1072	501184.04	1175395.65	3
1073	501184.02	1175396.15	3
1074	501188.90	1175395.96	3
1075	501188.86	1175396.46	3
1076	501195.82	1175396.41	3
1077	501195.86	1175396.91	3
1078	501196.71	1175396.20	8
1079	501196.83	1175396.70	3
1080	501197.55	1175396.33	8
1081	501200.07	1175395.03	8
1082	501200.00	1175395.53	8
1083	501201.55	1175395.01	3
1084	501201.51	1175395.51	3
1085	501208.64	1175396.45	3
1086	501208.04	1175396.83	3
1087	501206.83	1175404.46	3
1088	501206.30	1175404.53	8
1089	501207.06	1175405.09	8
1090	501208.81	1175405.22	3
1091	501208.59	1175405.68	3
1092	501210.57	1175406.31	3
1093	501210.27	1175406.71	3
1094	501212.38	1175408.07	3
1095	501212.02	1175408.41	3
1096	501213.95	1175409.91	3
1097	501213.57	1175410.23	3
1098	501215.93	1175412.50	3
1099	501215.51	1175412.76	3
1100	501218.67	1175418.23	3
1101	501218.21	1175418.43	3
1102	501219.78	1175421.19	3
1103	501219.28	1175421.29	3
1104	501220.05	1175424.85	3
1105	501219.55	1175424.91	3
1106	501220.75	1175429.80	3
1107	501220.25	1175429.86	3
1108	501220.92	1175431.43	3
1109	501220.38	1175431.13	3
1110	501219.54	1175432.12	3
1111	501219.28	1175431.70	3
1112	501219.11	1175432.43	3
1113	501218.61	1175432.17	3
1114	501219.24	1175435.74	3
1115	501218.74	1175435.70	3
1116	501219.06	1175436.71	3
1117	501218.66	1175436.15	3
1118	501218.10	1175436.58	3
1119	501217.68	1175436.02	3
1120	501217.91	1175437.92	3
1121	501217.41	1175437.88	3
1122	501217.92	1175438.92	3
1123	501217.42	1175438.94	3
1124	501218.17	1175442.20	3
1125	501217.67	1175442.18	3
1126	501217.20	1175447.22	3
1127	501216.70	1175447.14	3
1128	501217.13	1175447.73	3
1129	501216.63	1175447.67	3
1130	501038.44	1175394.51	3
1131	501038.13	1175394.51	8
1132	501038.70	1175395.25	3
1133	501038.36	1175395.91	8
1134	501039.34	1175395.00	3
1135	501039.48	1175395.48	3

1136	501047.28	1175393.24	3
1137	501047.37	1175393.73	3
1138	501049.52	1175392.85	3
1139	501049.33	1175393.39	3
1140	501049.77	1175393.14	3
1141	501049.39	1175393.46	3
1142	501085.02	1175427.91	3
1143	501084.56	1175428.10	3
1144	501085.79	1175429.50	3
1145	501085.33	1175429.69	3
1146	501086.32	1175431.14	3
1147	501085.84	1175431.28	3
1148	501086.64	1175432.20	3
1149	501086.24	1175432.60	3
1150	501087.14	1175431.97	8
1151	501086.76	1175432.70	3
1152	501087.27	1175432.46	8
1153	501086.85	1175433.31	3
1154	501086.36	1175433.42	3
1155	501087.75	1175436.34	3
1156	501087.26	1175436.47	3
1157	501088.53	1175439.52	3
1158	501088.04	1175439.64	3
1159	501089.34	1175442.39	3
1160	501088.85	1175442.51	3
1161	501089.74	1175444.29	3
1162	501089.25	1175444.37	3
1163	501090.10	1175447.96	3
1164	501089.61	1175448.01	3
1165	501090.13	1175448.26	3
1166	501089.67	1175448.83	3
1167	501090.81	1175448.16	3
1168	501090.84	1175448.66	3
1169	501036.63	1175320.79	3
1170	501037.41	1175320.66	8
1171	501037.33	1175320.16	8
1172	501036.55	1175320.29	3
1173	501156.91	1175554.22	3
1174	501156.56	1175554.80	3
1175	501156.96	1175554.72	3
1176	501157.79	1175554.18	3
1177	501157.78	1175554.68	3
1178	501160.52	1175554.40	3
1179	501160.45	1175554.90	3
1180	501161.92	1175554.67	3
1181	501161.79	1175555.15	3
1182	501162.92	1175555.01	3
1183	501162.85	1175555.52	3
1184	501156.82	1175557.01	3
1185	501156.33	1175557.07	3
1186	501157.10	1175559.73	3
1187	501156.60	1175559.76	3
1188	501157.23	1175563.13	3
1189	501156.73	1175563.14	3
1190	501157.21	1175566.78	3
1191	501156.71	1175566.75	3
1192	501157.10	1175567.62	3
1193	501156.60	1175567.57	3
1194	501156.45	1175567.96	3
1195	501149.27	1175569.90	3
1196	501156.66	1175568.43	3
1197	501149.31	1175569.38	3
1198	501149.37	1175570.37	3
1199	501148.72	1175569.72	3
1200	501148.87	1175570.39	3
1201	501148.91	1175575.06	3
1202	501148.41	1175575.00	3
1203	501148.66	1175576.78	3
1204	501148.16	1175576.70	3
1205	501147.99	1175559.38	3
1206	501147.86	1175559.38	8
1207	501148.62	1175559.51	3

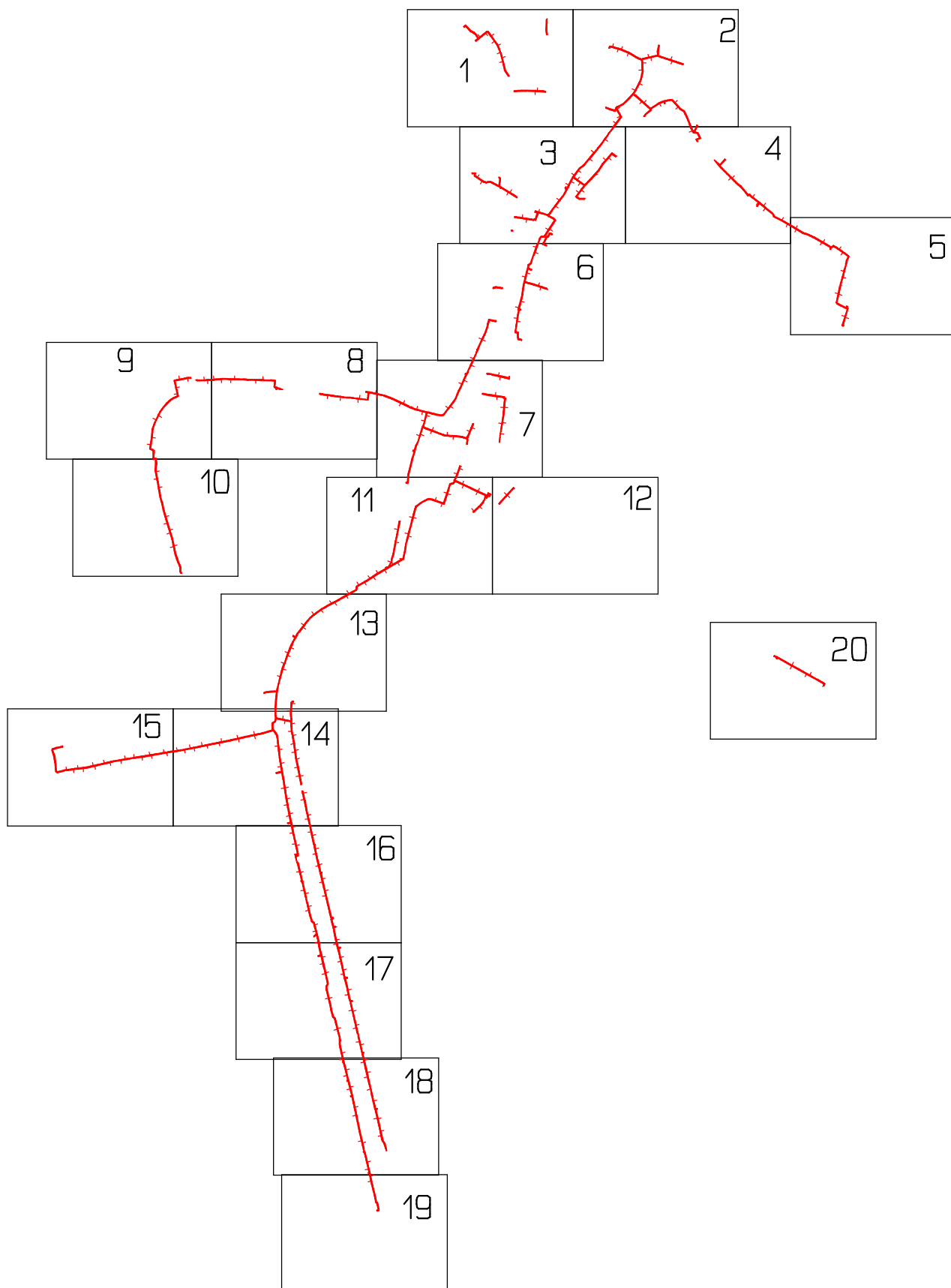
1208	501147.89	1175559.88	8
1209	501148.40	1175559.97	3
1210	501149.10	1175559.88	3
1211	501148.62	1175560.14	3
1212	501149.45	1175564.87	3
1213	501148.95	1175564.89	3
1214	501149.39	1175568.48	3
1215	501148.89	1175568.46	3
1216	501157.14	1175568.29	3
1217	501157.24	1175568.94	3
1218	501156.75	1175569.07	3
1219	501157.45	1175569.49	3
1220	501157.03	1175569.80	3
1221	501158.13	1175570.03	3
1222	501157.82	1175570.42	3
1223	501158.66	1175570.43	3
1224	501158.23	1175570.73	3
1225	501158.82	1175570.98	3
1226	501158.32	1175571.05	3
1227	501158.81	1175573.22	3
1228	501158.31	1175573.15	3
1229	501158.63	1175573.87	3
1230	501158.13	1175573.79	3
1231	501158.79	1175574.10	3
1232	501158.32	1175574.31	3
1233	501158.48	1175574.53	3
1234	501163.53	1175575.47	3
1235	501163.41	1175575.95	3
1236	501171.94	1175577.27	3
1237	501171.83	1175577.76	3
1238	501180.14	1175579.09	3
1239	501180.04	1175579.58	3
1240	501189.96	1175581.07	3
1241	501189.86	1175581.56	3
1242	501196.10	1175582.38	3
1243	501196.00	1175582.87	3
1244	501202.71	1175583.69	3
1245	501202.62	1175584.18	3
1246	501207.56	1175584.56	3
1247	501207.49	1175585.06	3
1248	501209.42	1175584.72	3
1249	501209.35	1175585.22	3
1250	501216.64	1175585.97	3
1251	501216.55	1175586.46	3
1252	501224.47	1175587.30	3
1253	501224.39	1175587.79	3
1254	501229.11	1175587.98	3
1255	501229.03	1175588.47	3
1256	501239.89	1175589.83	3
1257	501239.79	1175590.32	3
1258	501245.45	1175591.20	3
1259	501245.34	1175591.69	3
1260	501253.11	1175592.94	3
1261	501253.02	1175593.43	3
1262	501259.01	1175593.68	3
1263	501258.94	1175594.18	3
1264	501264.10	1175594.39	3
1265	501264.00	1175594.88	3
1266	501267.74	1175595.26	3
1267	501267.79	1175595.79	3
1268	501268.09	1175595.10	3
1269	501268.47	1175595.47	3
1270	501268.21	1175594.83	3
1271	501268.70	1175594.96	3
1272	501268.57	1175591.44	3
1273	501269.07	1175591.49	3
1274	501269.13	1175587.27	3
1275	501269.62	1175587.38	3
1276	501270.09	1175584.33	3
1277	501270.60	1175584.36	3
1278	501270.04	1175584.04	3
1279	501270.48	1175583.66	3

1280	501268.58	1175583.51	3	
1281	501268.72	1175583.03	3	
1282	501265.55	1175582.83	3	
1283	501265.65	1175582.34	3	
1284	501264.98	1175582.72	8	
1285	501265.07	1175582.23	8	
1286	501158.11	1175574.52	3	
1287	501157.73	1175574.19	3	
1288	501157.26	1175575.67	3	
1289	501156.85	1175575.39	3	
1290	501156.57	1175576.77	3	
1291	501156.09	1175576.58	3	
1292	500902.55	1175537.29	3	
1293	500903.84	1175536.67	3	
1294	500903.62	1175536.22	3	
1295	500902.10	1175536.95	3	
1296	500902.75	1175537.72	8	
1297	500902.11	1175537.52	3	
1298	500902.32	1175537.98	8	
1299	500898.60	1175539.52	3	
1300	500898.36	1175539.08	3	
1301	500891.25	1175543.62	3	
1302	500891.01	1175543.18	3	
1303	500882.04	1175548.73	3	
1304	500881.80	1175548.29	3	
1305	500878.52	1175550.70	3	
1306	500877.88	1175550.50	3	
1307	500878.79	1175551.27	3	
1308	500878.31	1175551.45	3	
1309	500878.83	1175551.45	8	
1310	500878.38	1175551.70	8	
1311	501157.17	1175397.09	3	
1312	501157.67	1175397.07	3	
1313	501016.54	1175322.68	8	
1314	501016.36	1175322.21	8	
1315	501019.48	1175328.34	8	
1316	501019.21	1175327.91	8	
1317	501105.54	1175814.38	3	
1318	501105.09	1175814.11	3	
1319	501104.87	1175817.61	3	
1320	501104.37	1175817.58	3	
1321	501205.98	1175395.91	3	Prusecik
1322	501206.20	1175396.46	3	Prusecik
1323	501207.94	1175399.54	3	Prusecik
1324	501207.53	1175399.09	3	Prusecik
1325	501026.85	1175314.66	8	Prusecik
1326	501026.84	1175315.17	8	Prusecik
1327	501035.07	1175372.33	8	Prusecik
1328	501034.83	1175371.54	8	Prusecik
1329	501031.00	1175249.68	8	Prusecik
1330	501031.20	1175249.19	8	Prusecik
1331	501030.94	1175349.63	8	Prusecik
1332	501031.89	1175353.01	8	Prusecik
1333	501031.47	1175349.84	8	Prusecik
1334	500868.81	1175368.90	3	Prusecik
1335	500871.03	1175358.17	3	Prusecik
1336	500870.89	1175357.68	3	Prusecik
1337	500867.11	1175335.87	3	Prusecik
1338	500866.73	1175336.41	3	Prusecik
1339	501052.49	1175459.86	8	Prusecik
1340	501052.95	1175459.62	8	Prusecik
1341	501027.44	1175314.57	8	Prusecik
1342	501027.50	1175315.06	8	Prusecik
1343	501029.94	1175249.64	8	Prusecik
1344	501029.92	1175249.14	8	Prusecik
1345	501033.72	1175313.59	8	Prusecik
1346	501033.79	1175314.08	8	Prusecik
1347	501068.86	1175450.02	8	Prusecik
1348	501068.27	1175449.79	8	Prusecik
1349	501041.14	1175404.79	8	Prusecik
1350	501039.62	1175394.94	8	Prusecik
1351	501039.70	1175395.43	8	Prusecik

1352	501093.41	1175488.18	8			Prusecik
1353	501071.37	1175458.11	8			Prusecik
1354	501070.88	1175458.24	8			Prusecik
1355	501059.04	1175425.04	3			Prusecik
1356	501059.32	1175424.41	3			Prusecik
1357	501073.25	1175423.44	3			Prusecik
1358	501048.70	1175404.22	8			Prusecik
1359	501048.62	1175403.72	8			Prusecik
1360	501047.02	1175393.30	8			Prusecik
1361	501047.09	1175393.79	8			Prusecik
1362	501050.73	1175455.78	3			Prusecik
1363	501048.11	1175455.20	8			Prusecik
1364	501130.43	1175703.44	3			Prusecik
1365	501134.36	1175688.37	3			Prusecik
1366	501134.22	1175688.85	3			Prusecik
1367	501132.02	1175696.98	3			Prusecik
1368	501156.27	1175568.50	3			Prusecik
1369	501156.31	1175567.99	3			Prusecik
1370	501145.48	1175641.60	3			Prusecik
1371	501138.52	1175671.53	3			Prusecik
1372	501136.94	1175678.16	3			Prusecik
1373	501136.82	1175678.68	3			Prusecik
1374	501115.20	1175774.80	8			Prusecik
1375	501114.71	1175774.72	8			Prusecik
1376	501159.66	1175574.35	8			Prusecik
1377	501159.63	1175574.86	8			Prusecik
1378	501073.48	1175423.89	8			Prusecik
1379	501065.16	1175447.57	8			Prusecik
1380	501065.33	1175448.04	8			Prusecik
1381	501058.13	1175450.86	3			Prusecik
1382	501058.44	1175451.27	3			Prusecik
1383	501146.21	1175641.54	8	501146.49	1175641.42	

Souřadnice bodů na dosavadní hranici pozemku určené měřením v terénu budou pro zápis do katastru nemovitostí upraveny podle dosavadního určení hranice lomovými body s kódem charakteristiky kvality souřadnic vyšším než 3. Důvodem je nerealizované zpřesnění této hranice, ke kterému je nutné doložit listinu prokazující shodu vlastníků na jejím průběhu [§ 50 odst. 1 písm. a) katastrálního zákona].

Přehled grafické části:













(8.06)  
(6.09)  
(0.74)  
683 685 (1.68) 687  
(4.08)  
682 (0.81) 684 (1.65) 686 (4.02)  
688 689  
(9.53)  
(9.75)  
695 (1.32) 696 (1.54) 698  
690 694  
693 (1.17) 697 (1.24)  
(0.96) 692 691 (0.74) (0.54)  
(5.22)  
(6.16)  
700 (1.57) 701 (0.44)  
699 (1.57) 702 (2.07)  
703 (2.33)  
704 (0.75) (0.67)  
705 (0.75) (0.67)  
706 (1.20) 707 (0.22)  
708 (1.53) 709 (1.54)

Q  
19/7  
222

180

1570/1

1058/7

1061

1570/2

1296/4

208

234

1625

Q  
1297/2

Q  
1296/2

Q  
17/1

206

1296/1



6

st. 46

44/1

40

44/1

39/1

1607

32

1580/22

1580/8

1621

1618

230/1

45

1580/21

1582/124

763/7

1582/82

1582/83

1582/84

79/1

85

87

1580/1

133/1

73

71

133/1

1589

79/2

84/1

84/2

84/3

85-1 (0.57) 906 (0.20) 907 (0.97) 908 (0.70) 909 (0.62) 910 (0.50) 911 (2.98) 912 (3.01)

919 (0.34) 920 (3.32) 921 (0.34) 922 (3.32) 923 (0.34) 924 (3.32) 925 (0.34) 926 (3.32) 927 (0.34) 928 (3.32)

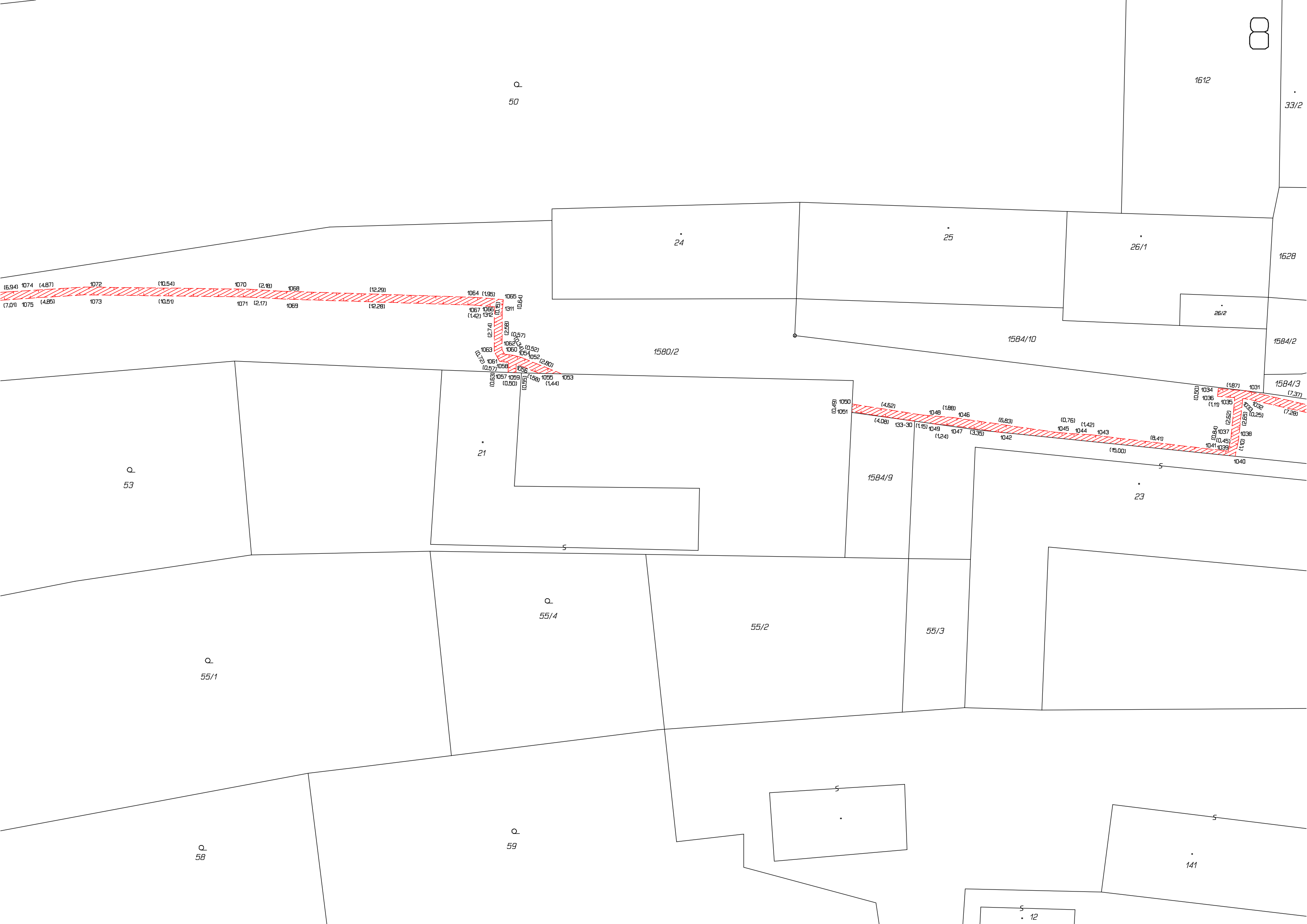
929 (0.57) 930 (0.57) 931 (0.57) 932 (0.57) 933 (0.57) 934 (0.57) 935 (0.57) 936 (0.57) 937 (0.57) 938 (0.57)

896 (0.32) 897 (1.43) 898 (0.91) 899 (0.22) 900 (0.22) 901 (0.91) 902 (1.60) 903 (1.60) 904 (0.50) 905 (0.50)

873 (2.00) 874 (2.17) 875 (2.49) 876 (2.00) 877 (2.20) 878 (7.31) 879 (2.45) 880 (0.78) 881 (0.78) 882 (0.78) 883 (1.79) 884 (1.50) 885 (3.20) 886 (3.72) 887 (0.22) 888 (2.46) 889 (2.21) 890 (0.85) 891 (0.50) 892 (0.87) 893 (0.50) 894 (0.85) 895 (4.98)

832 (1.25) 833 (1.82) 834 (1.36) 835 (1.34) 836 (4.70) 837 (1.30) 838 (1.81) 839 (1.77) 840 (0.50) 841 (1.77) 842 (0.50) 843 (1.25) 844 (1.25) 845 (0.90) 846 (1.25) 847 (1.35) 848 (0.50)





Q  
50

1612

33/2

24

25

26/1

1628

26/2

1584/2

1584/10

1580/2

1584/3

(7.37)

(7.28)

Q  
53

21

1584/9

23

Q  
55/4

55/2

55/3

Q  
55/1

Q  
58

Q  
59

141

S  
12

9

Q  
50

524/25

1085 (2,72) 1321 (4,51) 1083 (1,48) 1081 (1,51)  
 1086 (1,87) 1322 (4,79) 1084 (1,51) 1082 (1,51)  
 1323 (3,17) 1324 (5,03) 1080 (0,86) 1078 (0,91) 1076 (5,94)  
 1087 (5,03) 1088 (0,82) 1079 (0,99) 1077 (7,01)

1554

1580/2

127

192

Q  
53

191/1

524/4

1098 (3,38) 1099 (3,92) 1097 (2,23) 1095 (2,44)  
 1094 (2,42) 1092 (2,07) 1090 (2,13) 1087 (1,64)  
 1089 (1,94)

Q  
55/1

1100 (3,46) 1101 (3,00) 1102 (3,69) 1103 (3,62)  
 1104 (5,00) 1105 (5,00)

1106 (1,63) 1107 (1,28) 1109 (1,24) 1108 (1,54)  
 1110 (0,52) 1111 (3,53) 1112 (3,31) 1113 (3,91)  
 1114 (3,91) 1115 (3,99) 1116 (3,91) 1117 (3,91) 1118 (3,91)

124

524/5

Q  
58

st. 183

524/5

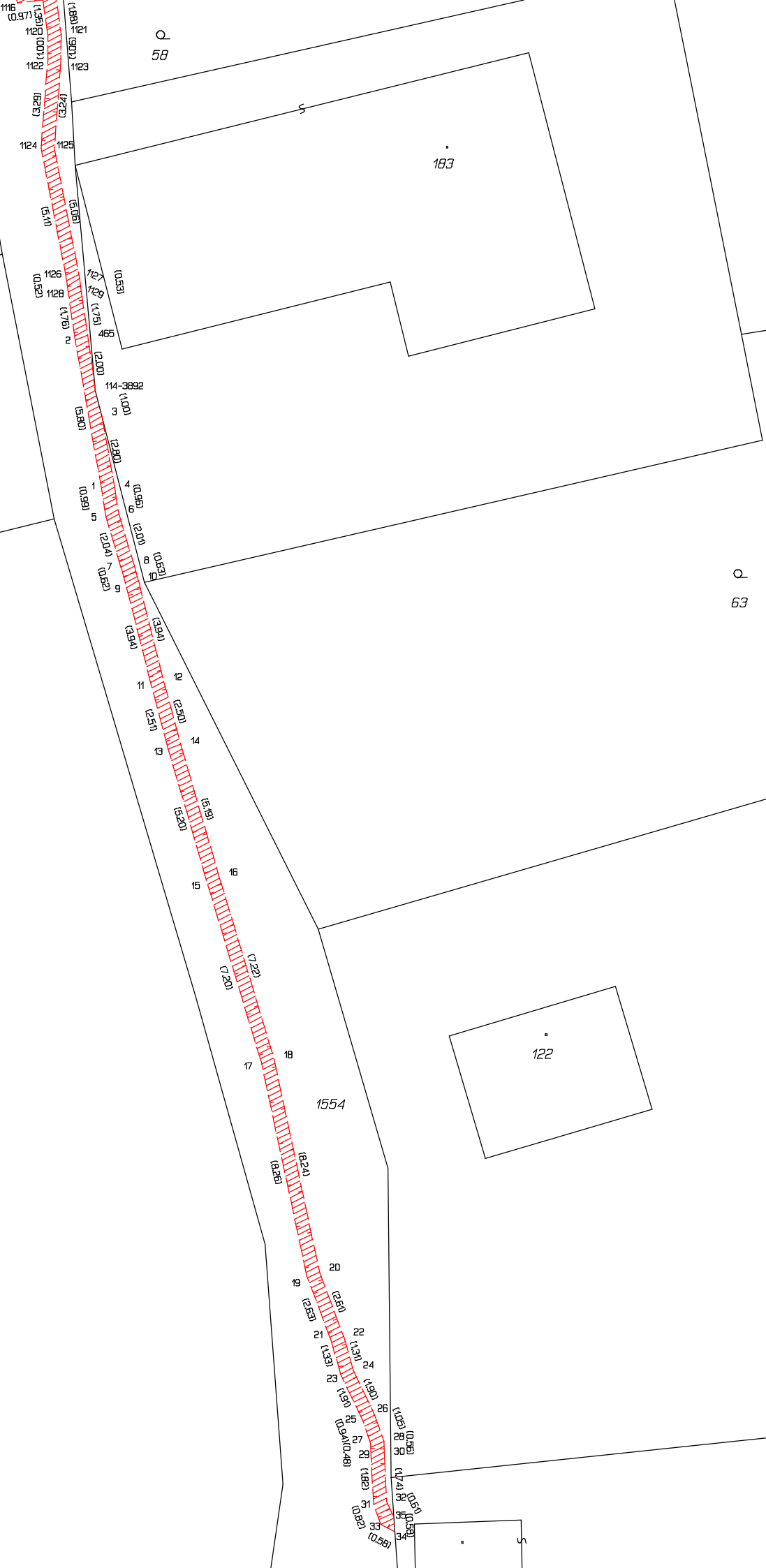


174

524/8

524/10

524/9



183

1554

122

Q.  
58

Q.  
63

Q.  
65

181/1





101

102

97

2 P

99

1605

1580/6

1582/124

Q  
1/2

⊕  
1600

1582/102

Q  
1/1

104

112

1582/111

1586

1582/110

110

115

1582/109

108

1546/2

114

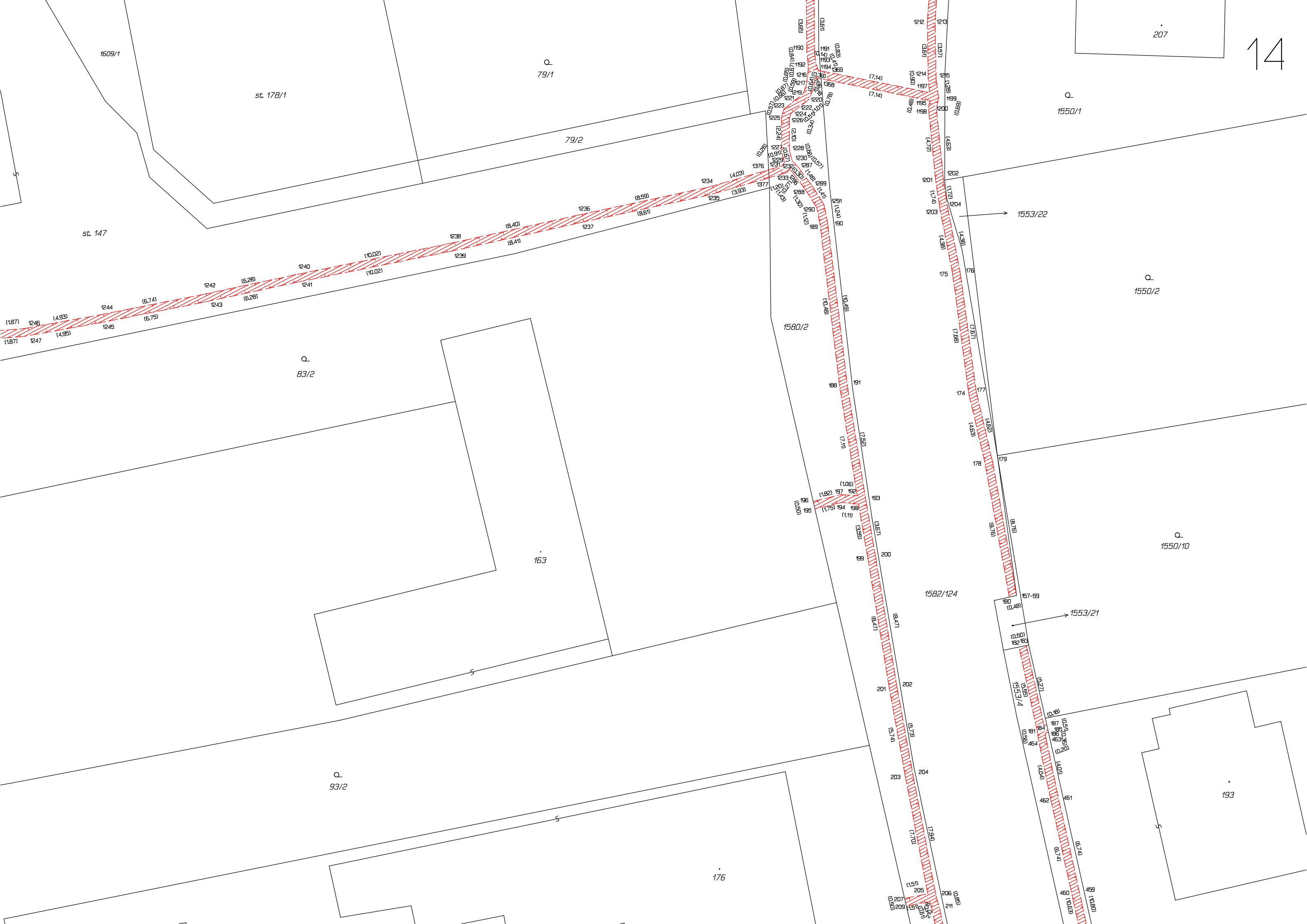
1546/2

1582/108

1546/2

1608





78/1

72/4

147

80/1

81/1

82/1

83/1

Q  
84/3

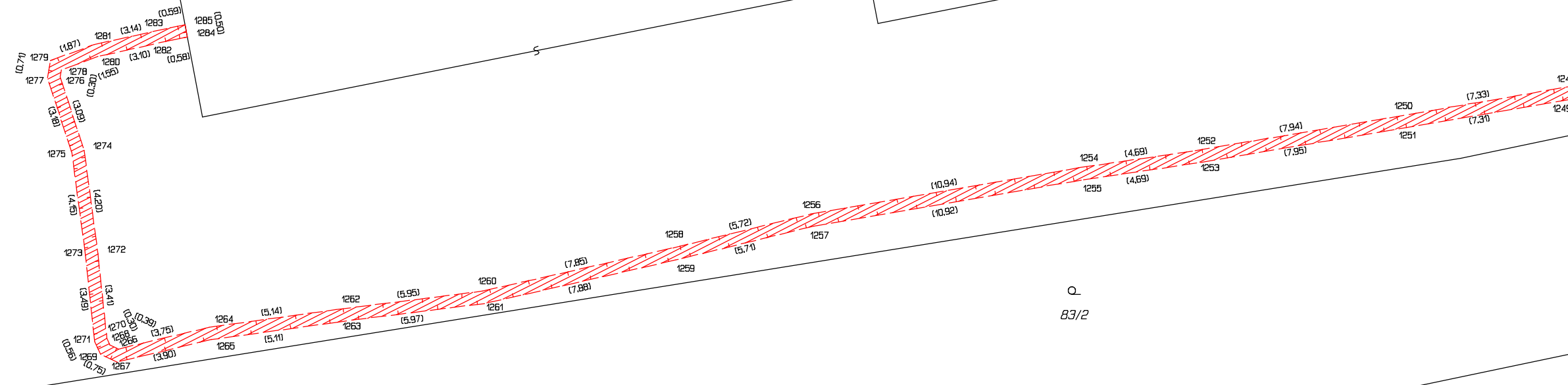
II  
84/1

Q  
83/2

93/1

Q  
93/2

st. 163





Q 1550/16

Q 1550/17

197

198

199

179

182

209

210

221

235

200

185

1580/2

1582/124

1553/4

Q 112/3

Q 120

Q 128/2





Q  
128/2

Q  
1507/1

Q  
136/2

1582/124

Q  
136/3

1553/4

Q  
143/4

1553/12

1502

201

184

186

226

200

236

Q  
1504

177

179

1580/2

128/2

1582/124

1553/4

1553/12

1502

201

184

186

226

200

236

Q  
1504

177

179

1580/2

128/2

1582/124

1553/4

1553/12

1502

201

184

186

226

200

236

Q  
1504

177

179

1580/2

128/2

1582/124

1553/4

1553/12

1502

201

184

186

226

200

236

Q  
1504

177

179

1580/2

128/2

1582/124

1553/4

1553/12

1502

201

184

186

226

200

236

Q  
1504

177

179

1580/2

128/2

1582/124

1553/4

1553/12

1502

201

184

186

226

200

236

Q  
1504

177

179

1580/2

128/2

1582/124

1553/4

1553/12

1502

201

184

186

226

200

236

Q  
1504

177

179

1580/2

128/2

1582/124

1553/4

1553/12

1502

201

184

186

226

200

236

Q  
1504

177

179

1580/2

128/2

1582/124

1553/4

1553/12

1502

201

184

186

226

200

236

Q  
1504

177

179

1580/2

128/2

1582/124

1553/4

1553/12

1502

201

184

186

226

200

236

Q  
1504

177

179

1580/2

128/2

1582/124

1553/4

1553/12

1502

201

184

186

226

200

236

Q  
1504

177

179

1580/2

128/2

1582/124

1553/4

1553/12

1502

201

184

186

226

200

236

Q  
1504

177

179

1580/2

128/2

1582/124

1553/4

1553/12

1502

201

184

186

226

200

236

Q  
1504

177

179

1580/2

128/2

1582/124

1553/4

1553/12

1502

201

184

186

226

200

236

Q  
1504

177

179

1580/2

128/2

1582/124

1553/4

1553/12

1502

201

184

186

226

200

236

Q  
1504

177

179

1580/2

128/2

1582/124

1553/4

1553/12

1502

201

184

186

226

200

236

Q  
1504

177

179

1580/2

128/2

1582/124

1553/4

1553/12

1502

201

184

186

226

200

236

Q  
1504

177

179

1580/2

128/2

1582/124

1553/4

1553/12

1502

201

184

186

226

200

236

Q  
1504

177

179

1580/2

128/2

1582/124

1553/4

1553/12

1502

201

184

186

226

200

236

Q  
1504

177

179

1580/2

128/2

1582/124

1553/4

1553/12

1502

201

184

186

226

200

236

Q  
1504

177

179

1580/2

128/2

1582/124

1553/4

1553/12

1502

201

184

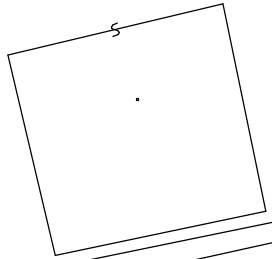
186



Q 143/4

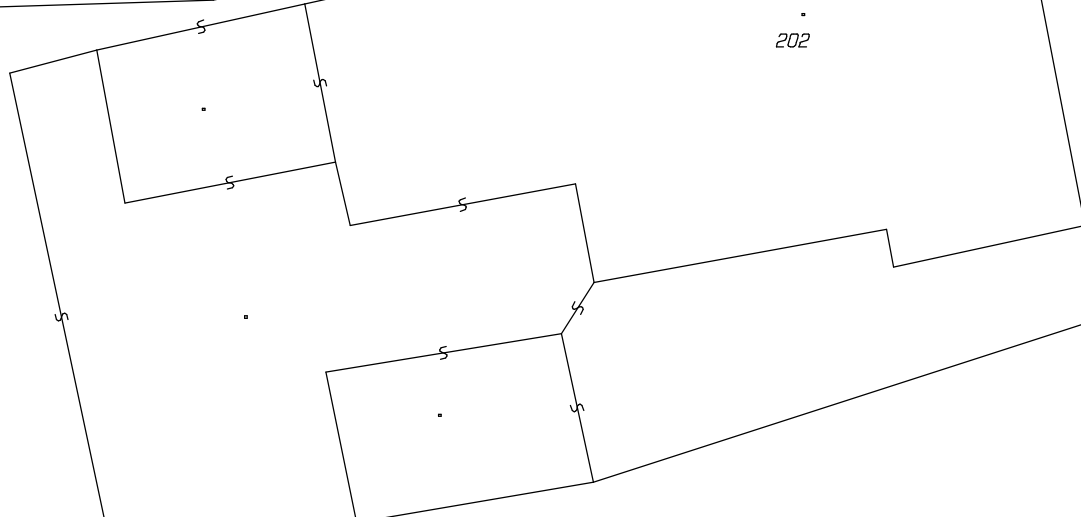
177

Q 151/2



202

Q 151/4



Q 151/1

170

175/5

171

175/9

175/8

1553/12

1502

1582/124

1553/11

1501

1553/10

1492



1319/2

1320/3

1320/1

1582/127

1319/1

11  
1536

Q  
1538

1294 (1.68)  
 1293 (1.43)  
 1295 (4.37)  
 1296 (0.50)  
 1297 (4.03)  
 1298 (0.32)  
 1300 (8.41)  
 1299 (8.42)  
 1302 (10.53)  
 1301 (10.53)  
 1304 (4.50)  
 1303 (4.04)  
 1306 (0.27)  
 1307 (0.32)  
 1308 (0.27)  
 1309 (0.32)  
 1310 (0.27)

1582/124

204

205

1537/1

Q  
1534/2

Q  
1533

1523

Q  
1535/1

220

11  
1522